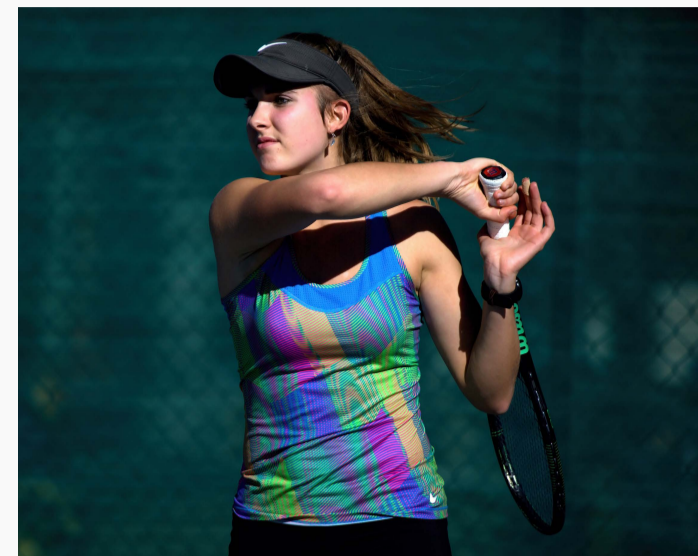


ELITE ATHLETE PROGRAM

OVER 50 ELITE STUDENT-ATHLETES
SUPPORTED IN 32 SPORTS,
INCLUDING:

- Alex Lack - Mountain Biking
- George Bailey - Cricket
- Huw Peacock - Athletics
- Catherine Krueger - Tennis (pictured)

CURRENT ELITE ATHLETES



ACADEMIC AND OTHER SUPPORT

✓ ENDORSED ELITE ATHLETE FRIENDLY UNIVERSITY

- 3 x Tasmanian campus locations in Hobart, Launceston and Burnie plus a Sydney campus.
- 1 x Full-Time nominated contact for elite student-athletes.
- Elite student-athlete specific contacts within **ALL** Faculties to implement flexible study options.
- Cross institutional study recognition available.
- Free access to the on campus gym as well as strength and conditioning coaching support.
- Access to elite student-athlete networking opportunities.
- Discounted rates to access the University's massage service.

FINANCIAL SCHOLARSHIPS & SUPPORT

3 sport scholarships valued at **\$7,500 p.a.**
available for eligible elite student-athletes.

Financial support may also be provided
for travel to national and international
competitions.

ELITE SPORT PARTNERSHIPS

The University has partnerships with the

**Tasmanian Institute of Sport
AND
Cricket Tasmania**

to provide opportunities for elite
student-athletes.